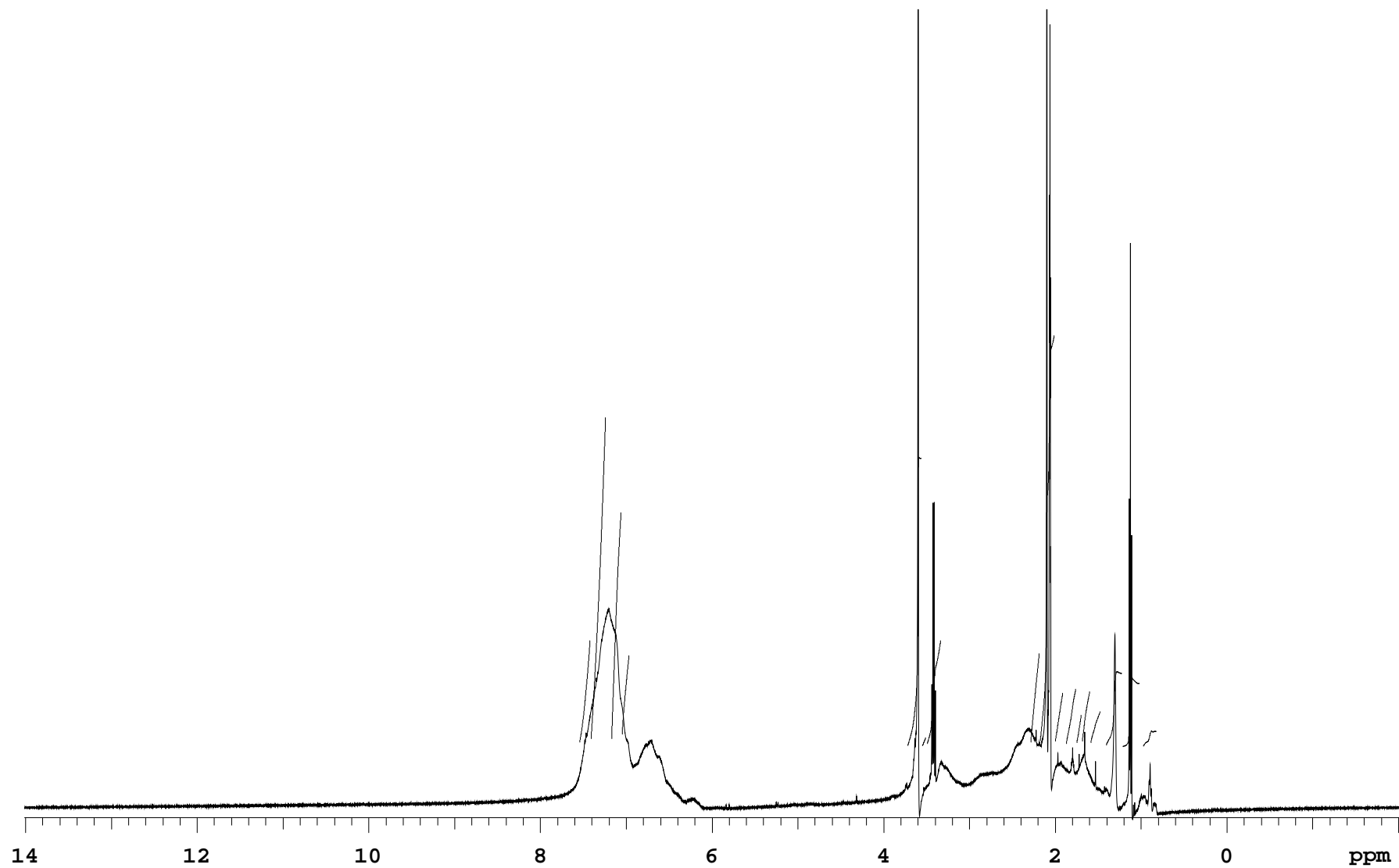


Reverse\_SMA\_Attempt\_3\_T2\_

Sample Name **Reverse\_SMA\_Attempt\_3\_T2** pulse sequence **PROTON**  
Date collected **2019-10-25** Solvent **acetone**

Temperature **25**  
Spectrometer **chpc-nmr500a-vnmrs500**

Study owner **gmn26**  
Operator **gmn26**

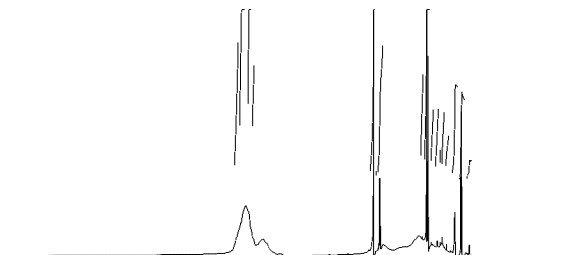


## Reverse\_SMA\_Attempt\_3\_T2\_

Sample Name Reverse\_SMA\_Attempt\_3\_T2\_ pulse sequence PROTON  
Date collected 2019-10-25 Solvent acetone

Temperature 25  
Spectrometer chpc-nmr500a-vnmrs500

Study owner gmn26  
Operator gmn26



## INTEGRAL VALUES

Integral	start(ppm)	end	value
1	7.55141	7.41399	5.400
2	7.4135	7.23452	16.241
3	7.17144	7.05554	11.387
4	7.05505	6.96263	4.432
5	3.72237	3.5566	13.828
6	3.55611	3.50183	0.509
7	3.50134	3.33067	5.160
8	2.28808	2.18049	4.621
9	2.18	2.00885	19.719
10	2.00885	1.90713	2.665
11	1.87583	1.75602	2.825
12	1.75602	1.69245	1.596
13	1.69196	1.59513	2.658
14	1.59465	1.4675	1.730
15	1.41077	1.2181	3.490
16	1.21712	1.0132	3.040
17	0.977991	0.814658	0.697

## SAMPLE

date Oct 25 2019  
solvent acetone  
file /home/bath/vnmrsys  
/data/gmn26/Reverse\_SMA\_  
Attempt\_3\_T2\_20191025\_0  
1/PROTON\_01.fid

## PRESATURATION

satmode n  
wet n

## SPECIAL

temp 25.0  
gain 28  
spin 0  
hst 0.008  
pw90 7.800  
alfa 10.000

## ACQUISITION

sw 8012.8  
at 2.045  
np 32768  
fb 4000  
bs 32  
d1 1.000  
nt 8  
ct 8

## FLAGS

il n  
in n  
dp y  
hs nn

## TRANSMITTER

tn H1  
sfrq 500.062  
tof 500.0  
tpwr 60  
pw 3.900

## PROCESSING

fn 65536

## DISPLAY

sp -1005.8  
wp 8012.6  
rfi 1006.1  
rfp 0  
rp -48.7  
lp 0

## DECOUPLER

dn 0  
dof 0  
dm nnn  
decwave W40\_OneNMR  
dpwr 38  
dmf 32258

## PLOT

wc 234  
sc 8  
vs 472  
th 9  
ai cdc ph

Plotname: PROTON\_01\_plot01

Data file /home/bath/vnmrsys/data/gmn26/Reverse\_SMA\_Attempt\_3\_T2\_20191025\_01/PROTON\_01.fid

Plot date 2019-10-25